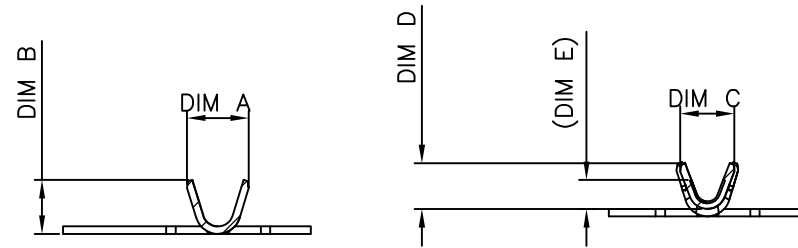
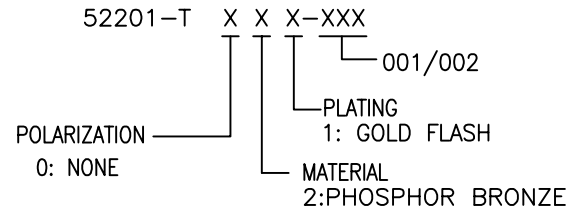


NOTES:

1. MATERIAL: PHOSPHOR BRONZE, THICKNESS 0.12mm±0.01
2. PLATING: 50~100u" NICKEL PLATING OVERALL, 1u" MIN. GOLD ON CONTACT, GOLD FLASH OVERALL
3. SPEC. PLS. REFER TO PS-52200-XXXXX-XXX
4. WIRE SIZE: 001 AWG30-AWG32; 002 AWG34-AWG36
5. INSULATION O.D:0.05mm MAX.

6. PART NUMBER



SECTION F-F  
SCALE 1:1

SECTION G-G  
SCALE 1:1

| XXX | DIM A | DIM B | DIM C | DIM D | DIM E |
|-----|-------|-------|-------|-------|-------|
| 001 | 1.07  | 1.08  | 1.03  | 0.90  | 0.70  |
| 002 | 1.03  | 0.87  | 0.88  | 0.74  | 0.50  |

|                                       |                  |          |  |           |                |
|---------------------------------------|------------------|----------|--|-----------|----------------|
| QUALITY SYMBOLS                       | DRAWN BY         | DATE     |  |           |                |
| MAJOR                                 | Tsai, Wang Kun   | 20/08/11 |  |           |                |
| CRITICAL                              | CHECKED BY       | DATE     | <b>0.80mm WTB Terminal Crimping Type</b> |           |                |
| GENERAL TOLERANCES (UNLESS SPECIFIED) | K, HISATOMI      | 20/08/11 |  |           |                |
| X. ±0.50                              | APPROVED BY      | DATE     | UNITS                                    | SIZE      | RFQ NO.        |
| .X ±0.25                              | Wang, Chun Sheng | 20/08/11 | mm                                       | A4        |                |
| .XX ±0.15                             |                  |          | SCALE                                    | SHEET NO. | REV            |
| .XXX ±0.10                            |                  |          | 1:1                                      | 1 OF 1    | A              |
| ANGLES ±2°                            |                  |          |  |           | DWG NO.        |
|                                       |                  |          |  |           | 52201-TXXX-XXX |